

March 6, 2003

To Whom It May Concern:

Please accept this as a formal request to change a street name indicated on a plat as "Hill Lane" to "Don Hill Lane". It was my intention from the beginning that this street be named 'Don Hill Lane'; however, it was inadvertently recorded on the plat as 'Hill'. If you have any questions, please do not hesitate to contact me.

Sincerely,

Todd Routh

**ORDINANCE NO. 2003-13**

**“AN ORDINANCE PROVIDING FOR THE CHANGE OF A STREET NAME  
WITHIN THE CITY OF TAYLOR, TEXAS; PROVIDING A REPEALING  
CLAUSE; AND PROVIDING A SEVERABILITY CLAUSE”**

WHEREAS, it is the desire of the City Council of the City of Taylor, Texas to change the name of a street in a newly platted subdivision of the City.

NOW, THEREFORE, BE IT ORDAINED BY THE CITY COUNCIL OF THE CITY OF TAYLOR:

SECTION 1.0 That the facts and recitations contained in the preamble of this Ordinance are hereby found and declared to be true and correct.

SECTION 2.0 The City Council hereby declares the name of “Hill Lane” located within the City limits to now be named “Don Hill Lane.”

SECTION 3.0 All other ordinances, parts of ordinances or resolutions in conflict with this Ordinance are hereby repealed to the extent of any such conflict.

SECTION 4.0 If any portion of the Ordinance shall, for any reason, be declared invalid by any court of competent jurisdiction, such invalidity shall not affect the remaining provisions hereof.

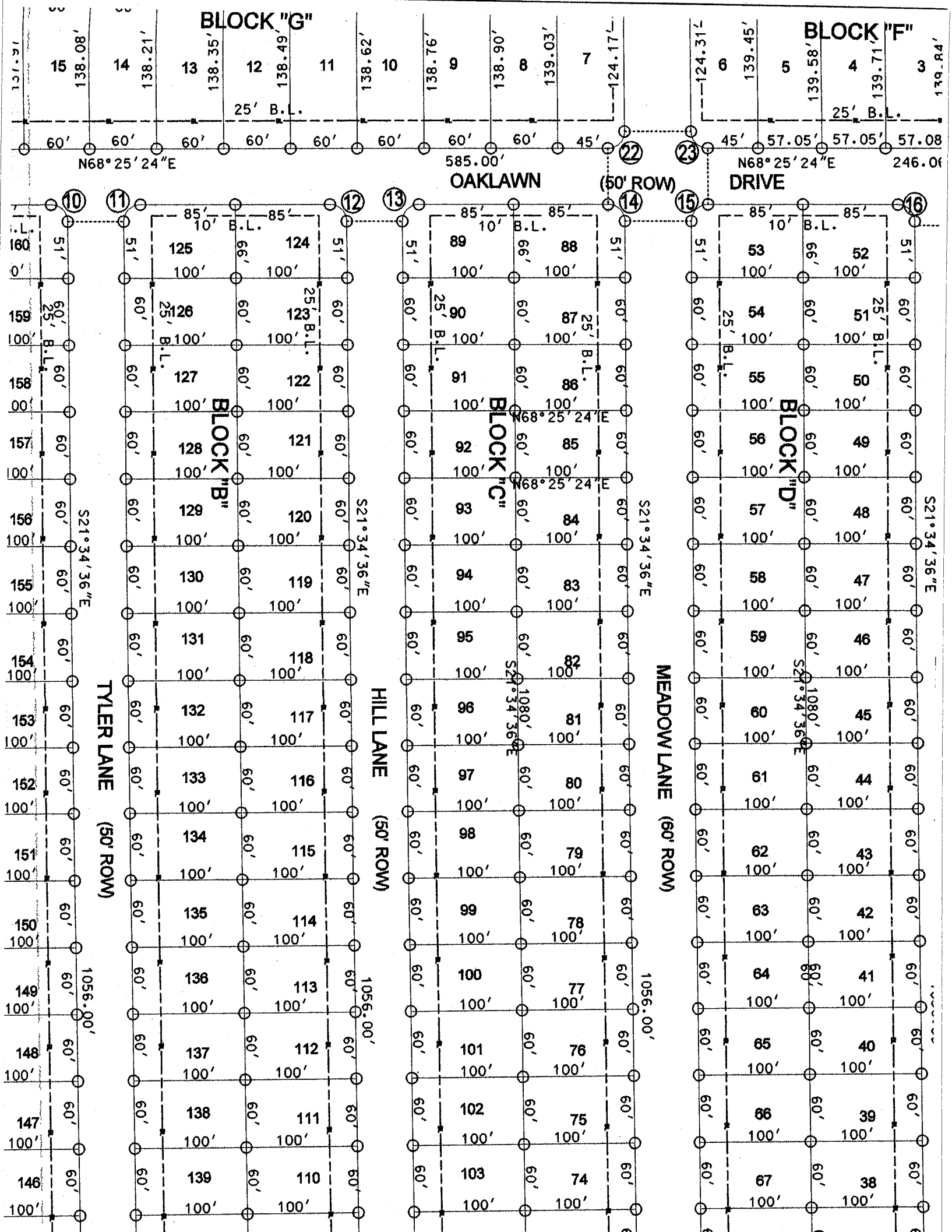
SECTION 5.0 In accordance with Article 8 of the City Charter, Ordinance No. 2003-13 was introduced before the City Council on the 13<sup>th</sup> day of March, 2003.

PASSED, APPROVED, and ADOPTED on the \_\_\_\_\_ day of March, 2003.

\_\_\_\_\_  
Jeffrey M. Berger, Mayor  
Taylor City Council

ATTEST:

\_\_\_\_\_  
Barbara Belz, City Clerk



**BLOCK "G"**

**BLOCK "F"**

**BLOCK "B"**

**BLOCK "C"**

**BLOCK "D"**

**TYLER LANE (50' ROW)**

**HILL LANE (50' ROW)**

**MEADOW LANE (60' ROW)**

**OAKLAWN (50' ROW) DRIVE**

**DRIVE**

15  
138.08'

14  
138.21'

13  
138.35'

12  
138.49'

11  
138.62'

10  
138.76'

9  
138.90'

8  
139.03'

7  
124.17'

6  
124.31'

5  
139.45'

4  
139.58'

3  
139.71'

2  
139.84'

25' B.L.

25' B.L.

N68°25'24"E

585.00'

N68°25'24"E

246.06'

10

11

12

13

14

15

16

160'

159'

158'

157'

156'

155'

154'

153'

152'

151'

150'

149'

148'

147'

146'

100'

100'

100'

100'

100'

100'

100'

100'

100'

100'

100'

100'

100'

125

126

127

128

129

130

131

132

133

134

135

136

137

138

139

100'

100'

100'

100'

100'

100'

100'

100'

100'

100'

100'

100'

100'

124

123

122

121

120

119

118

117

116

115

114

113

112

111

110

100'

100'

100'

100'

100'

100'

100'

100'

100'

100'

100'

100'

100'

89

90

91

92

93

94

95

96

97

98

99

100

101

102

103

100'

100'

100'

100'

100'

100'

100'

100'

100'

100'

100'

100'

100'

88

87

86

85

84

83

82

81

80

79

78

77

76

75

74

100'

100'

100'

100'

100'

100'

100'

100'

100'

100'

100'

100'

100'

53

54

55

56

57

58

59

60

61

62

63

64

65

66

67

100'

100'

100'

100'

100'

100'

100'

100'

100'

100'

100'

100'

100'

52

51

50

49

48

47

46

45

44

43

42

41

40

39

38

100'

100'

100'

100'

100'

100'

100'

100'

100'

100'

100'

100'

100'

53

54

55

56

57

58

59

60

61

62

63

64

65

66

67

100'

100'

100'

100'

100'

100'

100'

100'

100'

100'

100'

100'

100'

52

51

50

49

48

47

46

45

44

43

42

41

40

39

38

100'

100'

100'

100'

100'

100'

100'

100'

100'

100'

100'

100'

100'

51

60'

60'

60'

60'

60'

60'

60'

60'

60'

60'

60'

60'

60'