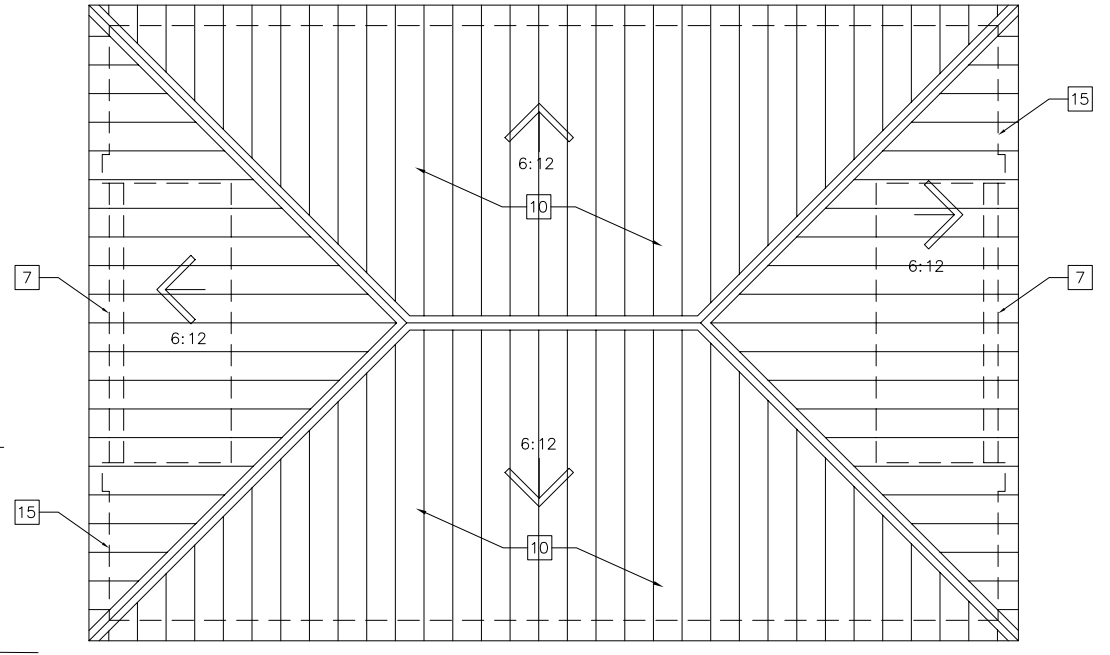
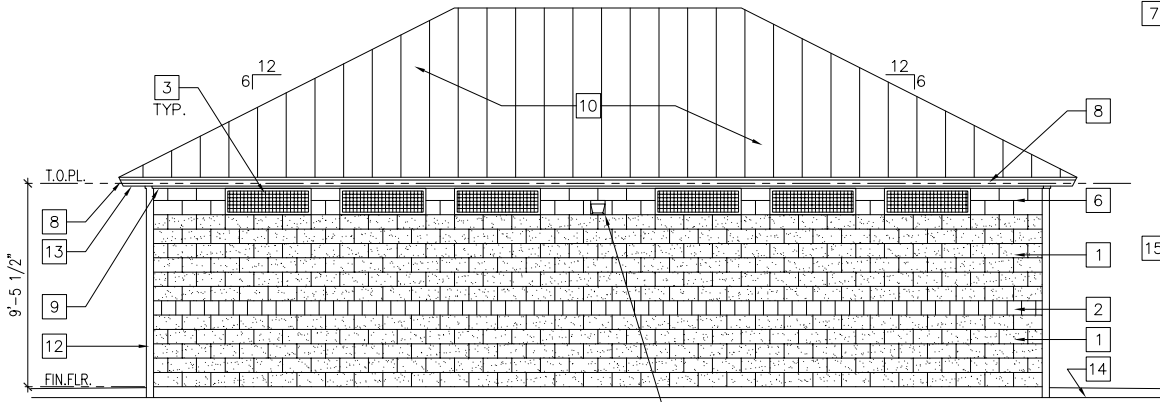
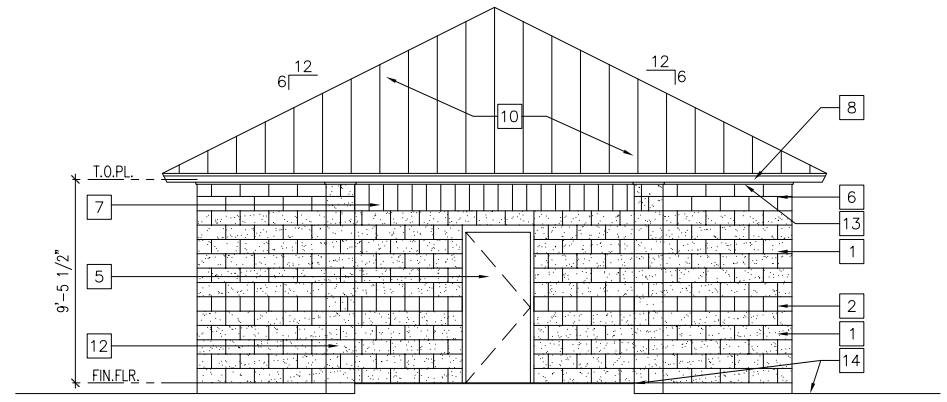
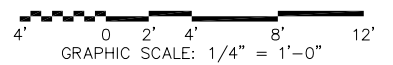


- NOTES BY SYMBOL "□"**
- 8" BURNISHED FACED CMU, (F-1)
 - 8" SQ. CERAMIC TILE ON SMOOTH FACE CMU (F-6)
 - 48"W.X16"T.-1 1/2" SQ. FIBERGLASS GRATE FASTENED IN 1 1/2"x1 1/2" FIBERGLASS ANGLE FRAME. (F-7)
 - 4"W. X 2"D. TROUGH/SLAB RECESS-SLOPE TO DRAIN, REF. DETAIL 8/A1.03
 - METAL DOOR & FRAME AS SCHEDULED, (F-5)
 - 8"D. SMOOTH FACE CMU, (F-2)
 - 16"D. SMOOTH FACE CMU LINTEL, (F-2)
 - 1X6 CEMENTITIOUS FASCIA BOARD, (F-4)
 - 1X3 CEMENTITIOUS FRIEZE, (F-4)
 - STANDING SEAM METAL ROOF, (F-3)
 - WALL MOUNTED LIGHT FIXTURE, REF. ELECTRICAL-LOCATED ON SOUTH ELEVATION ONLY
 - 12"D. BURNISHED FACE CMU COLUMN, (F-1)
 - 1/4" THK. CEMENTITIOUS VENTED SOFFIT BOARD, (F-4)
 - PAVING AND/OR LAWN AREA, REF. A0.01
 - FACE OF MASONRY WALL BELOW.

- EXTERIOR COLOR LEGEND "F-~"**
- (F-1) BURNISHED CMU: - FEATHERLITE
 - (F-2) SMOOTH CMU: - FEATHERLITE
 - (F-3) PREFINISHED METAL - MBCI:
 - (F-4) PAINTED CEMENT BOARD - BENJAMIN MOORE #HC-
 - (F-5) HOLLOW METAL PAINT - BENJAMIN MOORE DOOR/FRAME: #HC-
 - (F-6) CERAMIC TILE:
 - (F-7) FIBERGLASS GRATE & FRAME:



- GENERAL NOTES**
- DIMENSIONS ARE TAKEN FROM FACE OF MASONRY UNLESS INDICATED OTHERWISE.
 - REFER TO SHEET CS1.01 FOR SYMBOLS LEGEND & LIST OF ABBREVIATIONS.
 - NOTES BY SYMBOL ARE SHEET SPECIFIC.
 - DENOTES (F-~) EXTERIOR COLOR; REF. THIS SHEET FOR EXTERIOR COLOR LEGEND.



NO.	DESCRIPTION	DATE	APPROVED

KOMATSU
ARCHITECTURE

Murphy Park Restrooms
City of Taylor, Texas

PLANS, ELEVATIONS & SECTIONS

SHEET SIZE: 24" x 36"
JOB No: 04.101
DATE: 01/07/05
SHEET **A1.01**